

ULTRA-ZONE™

Forced Air Zone Controls

DATA SHEET

Model SMDL/BMDL

U.S. Patent No. 6,409,143

The NEW SMDL series of dampers are the same opposed blade design that has been so successful for many years. The SMDL is constructed of type 6063T6 aluminum with a stainless steel direct drive linkage. The motor is a 3 wire power open and power close 24 volt actuator with red and green LED's to show the open and closed position.

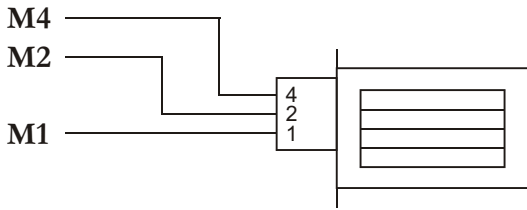
The SMDL can be installed by cutting a 2 1/2" wide opening in one side of the duct, sliding the damper in the cut out and securing with sheet metal screws provided. The SMDL can be installed in any position and any angle.

This NEW style damper is available in rectangular sizes up to 30 x 20 and square sizes up to 20 x 20 in 2" increments.

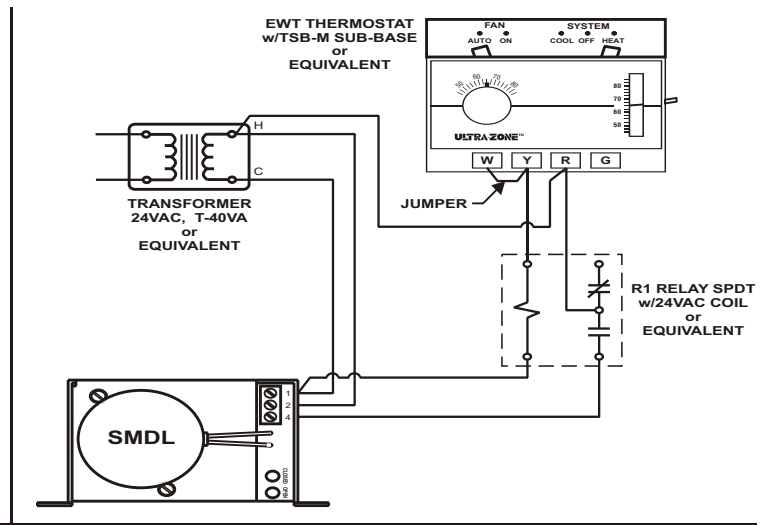
MOTOR Terminals

- 4 - power open
- 2 - power 24V 60Hz
- 1 - common

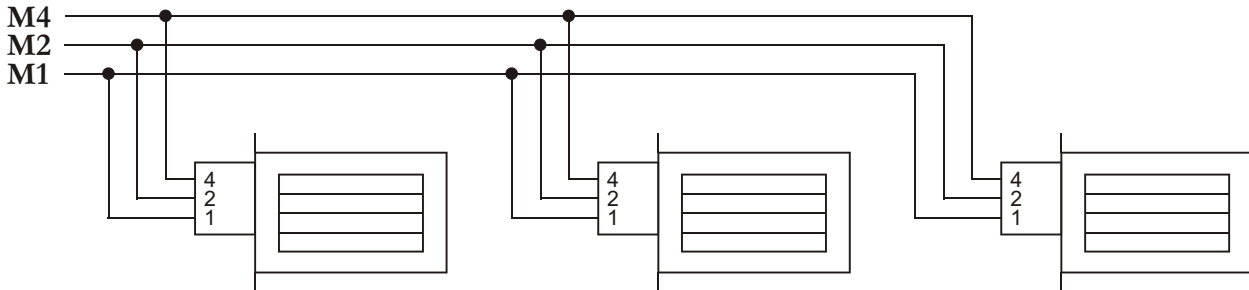
Wiring to a Control Panel



Damper controlled by thermostat



Wiring in Parallel



385 Hwy. 33 Englishtown, NJ 07726
 Ph: 800-446-3110 - Fx: 732-446-5362