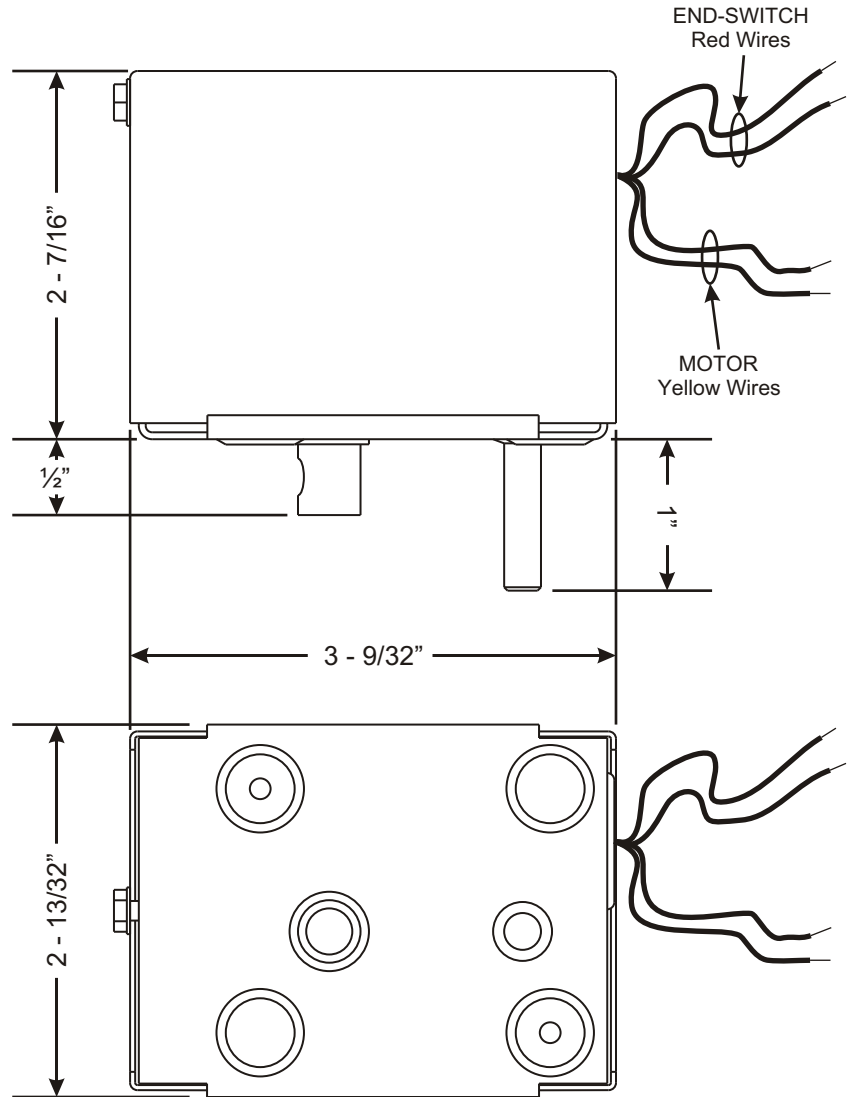


The MA-SRE24 and MA-SRE120 actuators are easy to wire up, and come with a 5 year warranty. The MA-SRE series is for On/Off, fail-safe control of dampers. It also provides true spring return operation for fail-safe operation. The MA-SRE Series provides 85° of rotation. Also included is an end-switch (Red wires) which close contact when the motor has fully rotated when powered. The two Yellow wires power the motor. Airflow can be from either direction and the Motor can be oriented in any position in a conditioned area.

Technical Data

Power Supply	
SRE24	24VAC ± 20%, 50/60 Hz
SRE120	120 VAC ±10%, 50/60 Hz
Power Consumption	
SRE24	6.5 Watt
SRE120	6.5 Watt
Transformer Sizing	7 VA (Class 2 power source)
Torque	2.2 In-lbs
End Switch	10 A @ 120 V
Shaft / Axle Size	5/16 In. Diameter
Running Time	
Motor	30-35 sec.
Spring	8 sec.
Humidity	Non-Condensing
Ambient Temperature	0°F to 120°F [-17°C to 49°C]
Storage Temperature	-40°F to 169°F [-40°C to 71°C]
Agency Listings	UL: File # E37601 CSA: File LR19535 CE: Compliant



SUBMITTAL FORM

SUBMITTED BY: _____

JOB: _____

ARCHITECT: _____

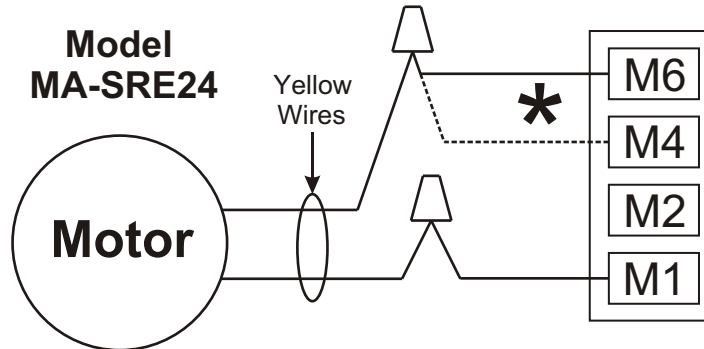
ENGINEER: _____

CONTRACTOR: _____

LOCATION: _____

WIRING SOLUTIONS

Wiring to Zone Control



- * WIRE TO M6 IF DAMPER IS POWER CLOSE / SPRING OPEN.
- * WIRE TO M4 IF DAMPER IS POWER OPEN / SPRING CLOSE.

Wiring with Field Supplied Control

