

ULTRA-ZONE™

Forced Air Zone Controls

DATA SHEET

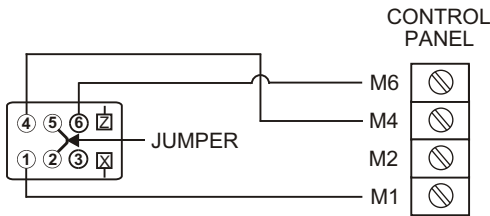
Models SMD, BMD, IMD

These series of dampers are an opposed blade design constructed of 6063T6 aluminum. The motor is a 3 wire power open/power closed 24 Volt motor. The dampers are installed by cutting a 2 1/2" wide opening in one side of the duct, sliding the damper in the cut out and securing with the sheet metal screws provided. These dampers can be installed in any position.

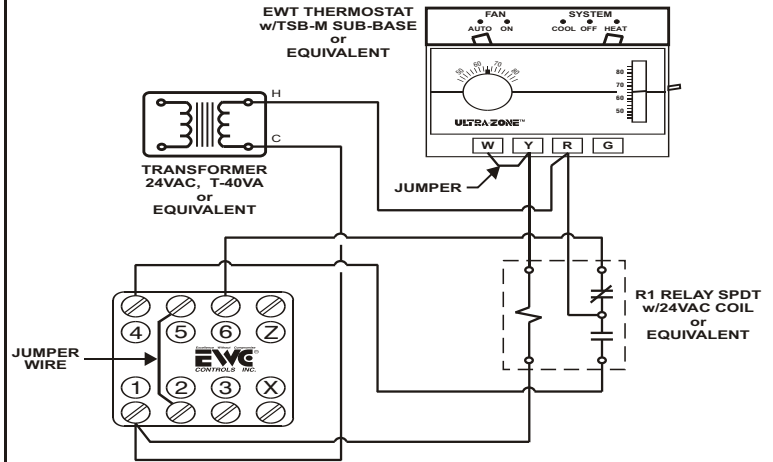
- 1) These motors **CAN NOT** be wired in parallel
- 2) A Field installed jumper between terminals 2 & 5 may be required

Wiring to a control panel

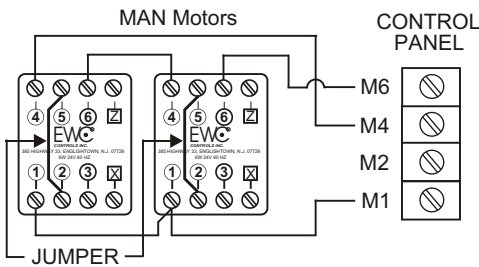
- 6 - power close
- 4 - power open
- 1 - common
- 2 & 5 - jumper



Wiring to a thermostat and SPDT relay



Wiring 2 dampers in Tandem



Wiring 3 or more dampers Per Zone

NOTES

1. If more than four (4) dampers are required per zone, add second relay. Wire coil in parallel with first relay as shown. Repeat damper motor wiring using a second transformer.
2. When damper switch is in closed position all dampers wired per this diagram will close when all thermostats are satisfied even if this is the last zone to satisfy.

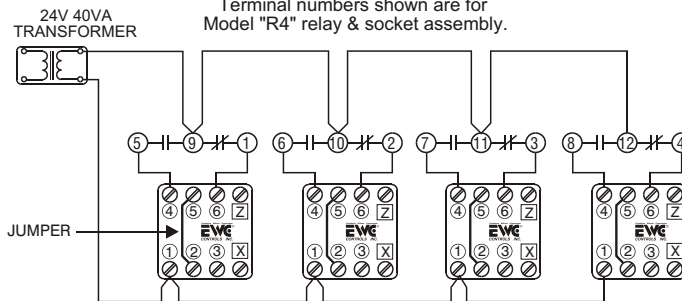
Field Supplied

RELAY COIL

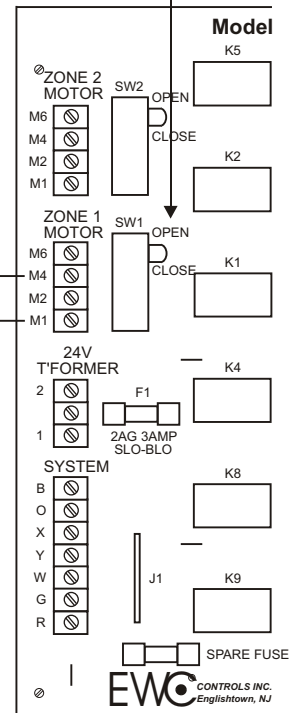
SEE NOTE 1

RELAY CONTACTS

Terminal numbers shown are for Model "R4" relay & socket assembly.



SEE NOTE 2



385 Hwy. 33 Englishtown, NJ 07726
Ph: 800-446-3110 - Fx: 732-446-5362

P/N 090377A0015 REV C